

# » Camlock Camlock



**ivg** ivg colbachini spa  
■■■■■■■■ ivg GROUP ■■■■■■■■  
INDUSTRIAL RUBBER HOSE

[WWW.IVGSPA.IT](http://WWW.IVGSPA.IT)

# Camlock

## Camlock

Progettato secondo la specifica militare MIL-C 27487. Utilizzato per trasferire liquidi a eccezione di gas e vapore. Distinguibile in maschio e femmina. La pressione di esercizio varia con il diametro e il materiale del raccordo. La resistenza alla temperatura è in funzione del materiale della guarnizione. Generalmente raccomandato per temperatura ambiente e non superiore a 60°C.

*It is designed according to MIL-C 27487 specification. It is used for the transfer of liquids except gas and steam. It exists in male and female version. The operating pressure varies with the diameter and the material of the fitting. The temperature resistance is in accordance with the gasket material. Generally recommended for room temperature and not higher than 60°C.*

### Materiali Materials

alluminio, ottone, inox, polipropilene (richiesta)  
aluminium, brass, stainless steel, polypropilene (request)

### Dimensioni Size

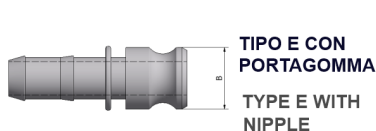
da 1/2" a 6", 8" (richiesta)  
from 1/2" to 6", 8" (request)

### Filettatura Thread

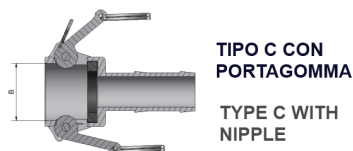
BSP/EN ISO 228-1, BSPT/EN 1026-1, NPT/ANSI B1.20.1 (request)

### Guarnizione Gasket

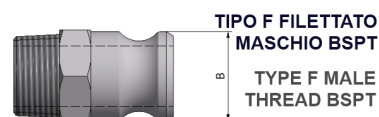
VITON, NBR, EPDM request, FPM request, PTFE (request)



DN	B
1/2"	24,1 mm
3/4"	32,1 mm
1"	36,5 mm
1"1/4	45,4 mm
1"1/2	53,4 mm
2"	63 mm
2"1/2	75,6 mm
3"	91,5 mm
4"	119,5 mm
5"	146 mm
6"	175,9 mm



DN	B
1/2"	24,5 mm
3/4"	32,4 mm
1"	37,2 mm
1"1/4	46 mm
1"1/2	54 mm
2"	63,7 mm
2"1/2	76,5 mm
3"	92,2 mm
4"	120 mm
5"	146,5 mm
6"	176,5 mm



DN	B
1/2"	1/2"
3/4"	3/4"
1"	1"
1"1/4	1"1/4
1"1/2	1"1/2
2"	2"
2"1/2	2"1/2
3"	3"
4"	4"
5"	5"
6"	6"

## Tubi consigliati Recommended hose

### Supertop pe-x

Mandata prodotti chimici e petroliferi, sottostrato PE-X

### Montreal 10

Tubo per mandata acqua

### Supertop LO bv

Tubo polivalente per aspirazione e mandata di prodotti chimici sottostrato

### Puertorico

Tubo per mandata e aspirazione carburanti ed olio

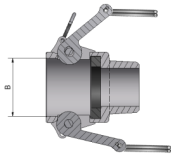
### Toronto

Tubo per aspirazione e mandata acqua

### Australia

Tubo per mandata carburanti ed olio

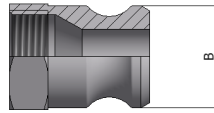
● **Camlock** *Camlock*



**TIPO B FILETTATO MASCHIO BSPT**

**TYPE B MALE THREAD BSPT**

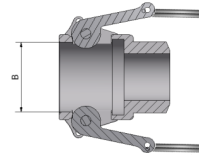
DN	B
1/2"	1/2"
3/4"	3/4"
1"	1"
1"1/4	1"1/4
1"1/2	1"1/2
2"	2"
2"1/2	2"1/2
3"	3"
4"	4"
5"	5"
6"	6"



**TIPO A FILETTATO FEMMINA BSP**

**TYPE A FEMALE THREAD BSP**

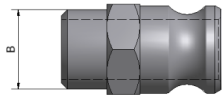
DN	B
1/2"	1/2"
3/4"	3/4"
1"	1"
1"1/4	1"1/4
1"1/2	1"1/2
2"	2"
2"1/2	2"1/2
3"	3"
4"	4"
5"	5"
6"	6"



**TIPO D FILETTATO FEMMINA BSP**

**TYPE D FEMALE THREAD BSP**

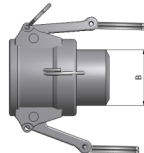
DN	B
1/2"	1/2"
3/4"	3/4"
1"	1"
1"1/4	1"1/4
1"1/2	1"1/2
2"	2"
2"1/2	2"1/2
3"	3"
4"	4"
5"	5"
6"	6"



**TIPO AWB**

**AWB TYPE**

DN	B
1/2"	21,34 mm
3/4"	26,67 mm
1"	33,40 mm
1"1/4	42,16 mm
1"1/2	48,26 mm
2"	60,33 mm
2"1/2	76,03 mm
3"	88,90 mm
4"	114,30 mm
6"	168,30 mm



**TIPO DWB**

**DWB TYPE**

DN	B
1/2"	21,34 mm
3/4"	26,67 mm
1"	33,40 mm
1"1/4	42,16 mm
1"1/2	48,26 mm
2"	60,33 mm
2"1/2	76,03 mm
3"	88,90 mm
4"	114,30 mm
6"	168,30 mm

● **Camlock** *Camlock*



**tipo E con portagomma**

*type E with male insert*

Codice Code	Materiale Material	Diam. raccordo ID coupling	B
3000235	alluminio aluminium	1/2"	24,1 mm
3000236	alluminio aluminium	3/4"	32,1 mm
3000237	alluminio aluminium	1"	36,5 mm
3000238	alluminio aluminium	1"1/4	45,4 mm
3000239	alluminio aluminium	1"1/2	53,4 mm
3000240	alluminio aluminium	2"	63 mm
3000241	alluminio aluminium	2"1/2	75,6 mm
3000242	alluminio aluminium	3"	91,5 mm
3000243	alluminio aluminium	4"	119,5 mm
3000244	alluminio aluminium	5"	146 mm
3000245	alluminio aluminium	6"	175,9 mm



**tipo E con portagomma**

*type E with male insert*

Codice Code	Materiale Material	Diam. raccordo ID coupling	B
3000246	ottone brass	1/2"	24,1 mm
3000247	ottone brass	3/4"	32,1 mm
3000248	ottone brass	1"	36,5 mm
3000249	ottone brass	1"1/4	45,4 mm
3000250	ottone brass	1"1/2	53,4 mm
3000251	ottone brass	2"	63 mm
3000252	ottone brass	2"1/2	75,6 mm
3000253	ottone brass	3"	91,5 mm
3000254	ottone brass	4"	119,5 mm
3000255	ottone brass	5"	146 mm
3000256	ottone brass	6"	175,9 mm



**tipo E con portagomma**

*type E with male insert*

Codice Code	Materiale Material	Diam. raccordo ID coupling	B
3000257	inox stainless steel	1/2"	24,1 mm
3000258	inox stainless steel	3/4"	32,1 mm
3000259	inox stainless steel	1"	36,5 mm
3000260	inox stainless steel	1"1/4	45,4 mm
3000261	inox stainless steel	1"1/2	53,4 mm
3000262	inox stainless steel	2"	63 mm
3000263	inox stainless steel	2"1/2	75,6 mm
3000264	inox stainless steel	3"	91,5 mm
3000265	inox stainless steel	4"	119,5 mm
3000266	inox stainless steel	5"	146 mm
3000267	inox stainless steel	6"	175,9 mm

● **Camlock** *Camlock*



**tipo C con portagomma**  
**type C with female insert**

Codice Code	Materiale Material	Diam. raccordo ID coupling	B
3000136	alluminio aluminium	1/2"	24,5 mm
3000137	alluminio aluminium	3/4"	32,4 mm
3000138	alluminio aluminium	1"	37,2 mm
3000139	alluminio aluminium	1"1/4	46 mm
3000140	alluminio aluminium	1"1/2	54 mm
3000141	alluminio aluminium	2"	63,7 mm
3000142	alluminio aluminium	2"1/2	76,5 mm
3000143	alluminio aluminium	3"	92,2 mm
3000144	alluminio aluminium	4"	120 mm
3000145	alluminio aluminium	5"	146,5 mm
3000146	alluminio aluminium	6"	176,5 mm



**tipo C con portagomma**  
**type C with female insert**

Codice Code	Materiale Material	Diam. raccordo ID coupling	B
3000147	ottone brass	1/2"	24,5 mm
3000148	ottone brass	3/4"	32,4 mm
3000149	ottone brass	1"	37,2 mm
3000150	ottone brass	1"1/4	46 mm
3000151	ottone brass	1"1/2	54 mm
3000152	ottone brass	2"	63,7 mm
3000153	ottone brass	2"1/2	76,5 mm
3000154	ottone brass	3"	92,2 mm
3000155	ottone brass	4"	120 mm
3000156	ottone brass	5"	146,5 mm
3000157	ottone brass	6"	176,5 mm



**tipo C con portagomma**  
**type C with female insert**

Codice Code	Materiale Material	Diam. raccordo ID coupling	B
3000158	inox stainless steel	1/2"	24,5 mm
3000159	inox stainless steel	3/4"	32,4 mm
3000160	inox stainless steel	1"	37,2 mm
3000161	inox stainless steel	1"1/4	46 mm
3000162	inox stainless steel	1"1/2	54 mm
3000163	inox stainless steel	2"	63,7 mm
3000164	inox stainless steel	2"1/2	76,5 mm
3000165	inox stainless steel	3"	92,2 mm
3000166	inox stainless steel	4"	120 mm
3000167	inox stainless steel	5"	146,5 mm
3000168	inox stainless steel	6"	176,5 mm



● **Camlock** *Camlock*



**tipo F filettato maschio BSPT**

*type F male BSPT thread*

<b>Codice Code</b>	<b>Materiale Material</b>	<b>Diam. raccordo ID coupling</b>	<b>BSPT</b>
3000169	alluminio aluminium	1/2"	1/2"
3000170	alluminio aluminium	3/4"	3/4"
3000171	alluminio aluminium	1"	1"
3000172	alluminio aluminium	1"1/4	1"1/4
3000173	alluminio aluminium	1"1/2	1"1/2
3000174	alluminio aluminium	2"	2"
3000175	alluminio aluminium	2"1/2	2"1/2
3000176	alluminio aluminium	3"	3"
3000177	alluminio aluminium	4"	4"
3000178	alluminio aluminium	5"	5"
3000179	alluminio aluminium	6"	6"



**tipo F filettato maschio BSPT**

*type F male BSPT thread*

<b>Codice Code</b>	<b>Materiale Material</b>	<b>Diam. raccordo ID coupling</b>	<b>BSPT</b>
3000180	ottone brass	1/2"	1/2"
3000181	ottone brass	3/4"	3/4"
3000182	ottone brass	1"	1"
3000183	ottone brass	1"1/4	1"1/4
3000184	ottone brass	1"1/2	1"1/2
3000185	ottone brass	2"	2"
3000186	ottone brass	2"1/2	2"1/2
3000187	ottone brass	3"	3"
3000188	ottone brass	4"	4"
3000189	ottone brass	5"	5"
3000190	ottone brass	6"	6"



**tipo F filettato maschio BSPT**

*type F male BSPT thread*

<b>Codice Code</b>	<b>Materiale Material</b>	<b>Diam. raccordo ID coupling</b>	<b>BSPT</b>
3000191	inox stainless steel	1/2"	1/2"
3000192	inox stainless steel	3/4"	3/4"
3000193	inox stainless steel	1"	1"
3000194	inox stainless steel	1"1/4	1"1/4
3000195	inox stainless steel	1"1/2	1"1/2
3000196	inox stainless steel	2"	2"
3000197	inox stainless steel	2"1/2	2"1/2
3000198	inox stainless steel	3"	3"
3000199	inox stainless steel	4"	4"
3000200	inox stainless steel	5"	5"
3000201	inox stainless steel	6"	6"

● **Camlock** *Camlock*



**tipo B filettato maschio BSPT**

*type B male BSPT thread*

Codice Code	Materiale Material	Diam. raccordo ID coupling	BSPT
3000268	alluminio aluminium	1/2"	1/2"
3000269	alluminio aluminium	3/4"	3/4"
3000270	alluminio aluminium	1"	1"
3000271	alluminio aluminium	1"1/4	1"1/4
3000272	alluminio aluminium	1"1/2	1"1/2
3000273	alluminio aluminium	2"	2"
3000274	alluminio aluminium	2"1/2	2"1/2
3000275	alluminio aluminium	3"	3"
3000276	alluminio aluminium	4"	4"
3000277	alluminio aluminium	5"	5"
3000278	alluminio aluminium	6"	6"



**tipo B filettato maschio BSPT**

*type B male BSPT thread*

Codice Code	Materiale Material	Diam. raccordo ID coupling	BSPT
3000279	ottone brass	1/2"	1/2"
3000280	ottone brass	3/4"	3/4"
3000281	ottone brass	1"	1"
3000282	ottone brass	1"1/4	1"1/4
3000283	ottone brass	1"1/2	1"1/2
3000284	ottone brass	2"	2"
3000285	ottone brass	2"1/2	2"1/2
3000286	ottone brass	3"	3"
3000287	ottone brass	4"	4"
3000288	ottone brass	5"	5"
3000289	ottone brass	6"	6"



**tipo B filettato maschio BSPT**

*type B male BSPT thread*

Codice Code	Materiale Material	Diam. raccordo ID coupling	BSPT
3000290	inox stainless steel	1/2"	1/2"
3000291	inox stainless steel	3/4"	3/4"
3000292	inox stainless steel	1"	1"
3000293	inox stainless steel	1"1/4	1"1/4
3000294	inox stainless steel	1"1/2	1"1/2
3000295	inox stainless steel	2"	2"
3000296	inox stainless steel	2"1/2	2"1/2
3000297	inox stainless steel	3"	3"
3000298	inox stainless steel	4"	4"
3000299	inox stainless steel	5"	5"
3000300	inox stainless steel	6"	6"

● **Camlock** *Camlock*



**tipo A filettato femmina BSP**  
*type A female BSP thread*

<b>Codice Code</b>	<b>Materiale Material</b>	<b>Diam. raccordo ID coupling</b>	<b>BSP</b>
3000202	alluminio aluminium	1/2"	1/2"
3000203	alluminio aluminium	3/4"	3/4"
3000204	alluminio aluminium	1"	1"
3000205	alluminio aluminium	1"1/4	1"1/4
3000206	alluminio aluminium	1"1/2	1"1/2
3000207	alluminio aluminium	2"	2"
3000208	alluminio aluminium	2"1/2	2"1/2
3000209	alluminio aluminium	3"	3"
3000210	alluminio aluminium	4"	4"
3000211	alluminio aluminium	5"	5"
3000212	alluminio aluminium	6"	6"



**tipo A filettato femmina BSP**  
*type A female BSP thread*

<b>Codice Code</b>	<b>Materiale Material</b>	<b>Diam. raccordo ID coupling</b>	<b>BSP</b>
3000213	ottone brass	1/2"	1/2"
3000214	ottone brass	3/4"	3/4"
3000215	ottone brass	1"	1"
3000216	ottone brass	1"1/4	1"1/4
3000217	ottone brass	1"1/2	1"1/2
3000218	ottone brass	2"	2"
3000219	ottone brass	2"1/2	2"1/2
3000220	ottone brass	3"	3"
3000221	ottone brass	4"	4"
3000222	ottone brass	5"	5"
3000223	ottone brass	6"	6"



**tipo A filettato femmina BSP**  
*type A female BSP thread*

<b>Codice Code</b>	<b>Materiale Material</b>	<b>Diam. raccordo ID coupling</b>	<b>BSP</b>
3000224	inox stainless steel	1/2"	1/2"
3000225	inox stainless steel	3/4"	3/4"
3000226	inox stainless steel	1"	1"
3000227	inox stainless steel	1"1/4	1"1/4
3000228	inox stainless steel	1"1/2	1"1/2
3000229	inox stainless steel	2"	2"
3000230	inox stainless steel	2"1/2	2"1/2
3000231	inox stainless steel	3"	3"
3000232	inox stainless steel	4"	4"
3000233	inox stainless steel	5"	5"
3000234	inox stainless steel	6"	6"



● **Camlock** *Camlock*



**tipo D filettato femmina BSP**  
**type D female BSP thread**

<b>Codice Code</b>	<b>Materiale Material</b>	<b>Diam. raccordo ID coupling</b>	<b>BSP</b>
3000301	alluminio aluminium	1/2"	1/2"
3000302	alluminio aluminium	3/4"	3/4"
3000303	alluminio aluminium	1"	1"
3000304	alluminio aluminium	1"1/4	1"1/4
3000305	alluminio aluminium	1"1/2	1"1/2
3000306	alluminio aluminium	2"	2"
3000307	alluminio aluminium	2"1/2	2"1/2
3000308	alluminio aluminium	3"	3"
3000309	alluminio aluminium	4"	4"
3000310	alluminio aluminium	5"	5"
3000311	alluminio aluminium	6"	6"



**tipo D filettato femmina BSP**  
**type D female BSP thread**

<b>Codice Code</b>	<b>Materiale Material</b>	<b>Diam. raccordo ID coupling</b>	<b>BSP</b>
3000312	ottone brass	1/2"	1/2"
3000313	ottone brass	3/4"	3/4"
3000314	ottone brass	1"	1"
3000315	ottone brass	1"1/4	1"1/4
3000316	ottone brass	1"1/2	1"1/2
3000317	ottone brass	2"	2"
3000318	ottone brass	2"1/2	2"1/2
3000319	ottone brass	3"	3"
3000320	ottone brass	4"	4"
3000321	ottone brass	5"	5"
3000322	ottone brass	6"	6"



**tipo D filettato femmina BSP**  
**type D female BSP thread**

<b>Codice Code</b>	<b>Materiale Material</b>	<b>Diam. raccordo ID coupling</b>	<b>BSP</b>
3000323	inox stainless steel	1/2"	1/2"
3000324	inox stainless steel	3/4"	3/4"
3000325	inox stainless steel	1"	1"
3000326	inox stainless steel	1"1/4	1"1/4
3000327	inox stainless steel	1"1/2	1"1/2
3000328	inox stainless steel	2"	2"
3000329	inox stainless steel	2"1/2	2"1/2
3000330	inox stainless steel	3"	3"
3000331	inox stainless steel	4"	4"
3000332	inox stainless steel	5"	5"
3000333	inox stainless steel	6"	6"

● **Camlock** *Camlock*



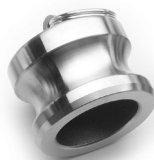
**tipo AWB a saldare**  
**male AWB**

<b>Codice Code</b>	<b>Materiale Material</b>	<b>Diam. raccordo ID coupling</b>	<b>B</b>
2210312	inox stainless steel	1/2"	21,34 mm
2210320	inox stainless steel	3/4"	26,67 mm
2210339	inox stainless steel	1"	33,40 mm
2210347	inox stainless steel	1"1/4	42,16 mm
2210355	inox stainless steel	1"1/2	48,26 mm
2210363	inox stainless steel	2"	60,33 mm
2210371	inox stainless steel	2"1/2	76,03 mm
2210380	inox stainless steel	3"	88,90 mm
2210398	inox stainless steel	4"	114,30 mm
2210401	inox stainless steel	6"	168,30 mm



**tipo DWB a saldare**  
**female DWB**

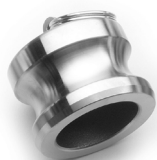
<b>Codice Code</b>	<b>Materiale Material</b>	<b>Diam. raccordo ID coupling</b>	<b>B</b>
2210410	inox stainless steel	1/2"	21,34 mm
2210428	inox stainless steel	3/4"	26,67 mm
2210436	inox stainless steel	1"	33,40 mm
2210444	inox stainless steel	1"1/4	42,16 mm
2210452	inox stainless steel	1"1/2	48,26 mm
2210460	inox stainless steel	2"	60,33 mm
2210479	inox stainless steel	2"1/2	76,03 mm
2210487	inox stainless steel	3"	88,90 mm
2210495	inox stainless steel	4"	114,30 mm
2210509	inox stainless steel	6"	168,30 mm



**tappo tipo DP**  
**cap type DP**

<b>Codice Code</b>	<b>Materiale Material</b>	<b>Diam. raccordo ID coupling</b>	<b>B</b>
3000334	alluminio aluminium	1/2"	24,1 mm
3000335	alluminio aluminium	3/4"	32,1 mm
3000336	alluminio aluminium	1"	36,5 mm
3000337	alluminio aluminium	1"1/4	45,4 mm
3000338	alluminio aluminium	1"1/2	53,4 mm
3000339	alluminio aluminium	2"	63 mm
3000340	alluminio aluminium	2"1/2	75,6 mm
3000341	alluminio aluminium	3"	91,5 mm
3000342	alluminio aluminium	4"	119,5 mm
3000343	alluminio aluminium	5"	146 mm
3000344	alluminio aluminium	6"	175,9 mm

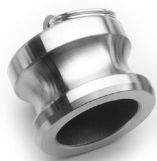
● **Camlock** *Camlock*



**tappo tipo DP**

*cap type DP*

<b>Codice Code</b>	<b>Materiale Material</b>	<b>Diam. raccordo ID coupling</b>	<b>B</b>
3000345	ottone brass	1/2"	24,1 mm
3000346	ottone brass	3/4"	32,1 mm
3000347	ottone brass	1"	36,5 mm
3000348	ottone brass	1"1/4	45,4 mm
3000349	ottone brass	1"1/2	53,4 mm
3000350	ottone brass	2"	63 mm
3000351	ottone brass	2"1/2	75,6 mm
3000352	ottone brass	3"	91,5 mm
3000353	ottone brass	4"	119,5 mm
3000354	ottone brass	5"	146 mm
3000355	ottone brass	6"	175,9 mm



**tappo tipo DP**

*cap type DP*

<b>Codice Code</b>	<b>Materiale Material</b>	<b>Diam. raccordo ID coupling</b>	<b>B</b>
3000356	inox stainless steel	1/2"	24,1 mm
3000357	inox stainless steel	3/4"	32,1 mm
3000358	inox stainless steel	1"	36,5 mm
3000359	inox stainless steel	1"1/4	45,4 mm
3000360	inox stainless steel	1"1/2	53,4 mm
3000361	inox stainless steel	2"	63 mm
3000362	inox stainless steel	2"1/2	75,6 mm
3000363	inox stainless steel	3"	91,5 mm
3000364	inox stainless steel	4"	119,5 mm
3000365	inox stainless steel	5"	146 mm
3000366	inox stainless steel	6"	175,9 mm



**tappo tipo DC**

*cap type DC*

<b>Codice Code</b>	<b>Materiale Material</b>	<b>Diam. raccordo ID coupling</b>	<b>B</b>
3000367	alluminio aluminium	1/2"	24,5 mm
3000368	alluminio aluminium	3/4"	32,4 mm
3000369	alluminio aluminium	1"	37,2 mm
3000370	alluminio aluminium	1"1/4	46 mm
3000371	alluminio aluminium	1"1/2	54 mm
3000372	alluminio aluminium	2"	63,7 mm
3000373	alluminio aluminium	2"1/2	76,5 mm
3000374	alluminio aluminium	3"	92,2 mm
3000375	alluminio aluminium	4"	120 mm
3000376	alluminio aluminium	5"	146,5 mm
3000377	alluminio aluminium	6"	176,5 mm

● **Camlock** *Camlock*



**tappo tipo DC**

**cap type DC**

Codice Code	Materiale Material	Diam. raccordo ID coupling	B
3000378	ottone brass	1/2"	24,5 mm
3000379	ottone brass	3/4"	32,4 mm
3000380	ottone brass	1"	37,2 mm
3000381	ottone brass	1"1/4	46 mm
3000382	ottone brass	1"1/2	54 mm
3000383	ottone brass	2"	63,7 mm
3000384	ottone brass	2"1/2	76,5 mm
3000385	ottone brass	3"	92,2 mm
3000386	ottone brass	4"	120 mm
3000387	ottone brass	5"	146,5 mm
3000388	ottone brass	6"	176,5 mm



**tappo tipo DC**

**cap type DC**

Codice Code	Materiale Material	Diam. raccordo ID coupling	B
3000389	inox stainless steel	1/2"	24,5 mm
3000390	inox stainless steel	3/4"	32,4 mm
3000391	inox stainless steel	1"	37,2 mm
3000392	inox stainless steel	1"1/4	46 mm
3000393	inox stainless steel	1"1/2	54 mm
3000394	inox stainless steel	2"	63,7 mm
3000395	inox stainless steel	2"1/2	76,5 mm
3000396	inox stainless steel	3"	92,2 mm
3000397	inox stainless steel	4"	120 mm
3000398	inox stainless steel	5"	146,5 mm
3000399	inox stainless steel	6"	176,5 mm



**riduzione maschio tipo A 3/4" filettato  
femmina BSP 1/2"**

**male adapter type A 3/4" female BSP  
1/2" thread**

Codice Code	Materiale Material	Diam. raccordo ID coupling
2204509	ottone brass	-



**riduzione maschio tipo D 3/4" filettato  
femmina BSP 1/2"**

**male adapter type D 3/4" female BSP  
1/2" thread**

Codice Code	Materiale Material	Diam. raccordo ID coupling
2204495	ottone brass	-

● **Camlock** *Camlock*



**Guarnizione**

**Gasket**

<b>Codice Code</b>	<b>Materiale Material</b>	<b>Diam. raccordo ID coupling</b>
4702638	viton	1/2"
4702212	viton	3/4"
4702220	viton	1"
4702239	viton	1"1/4
4702247	viton	1"1/2
2205122	viton	2"
4702263	viton	2"1/2
4702271	viton	3"
4702280	viton	4"



**Guarnizione**

**Gasket**

<b>Codice Code</b>	<b>Materiale Material</b>	<b>Diam. raccordo ID coupling</b>
4700880	nbr	1/2"
4700899	nbr	3/4"
4700910	nbr	1"
4700929	nbr	1"1/4
4700937	nbr	1"1/2
4700864	nbr	2"
4700945	nbr	2"1/2
4700872	nbr	3"
4700686	nbr	4"
4700953	nbr	5"
4700694	nbr	6"